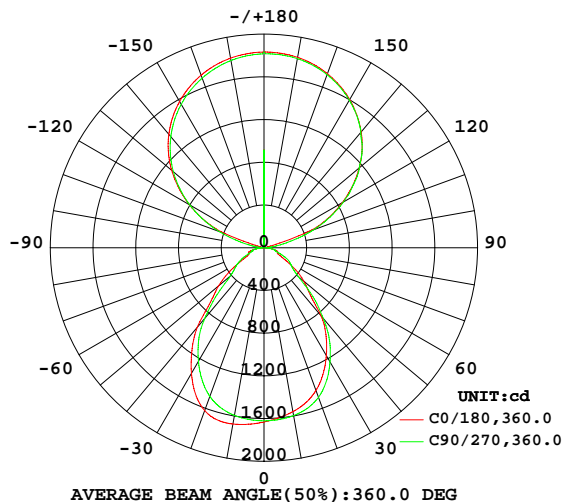


## LUMINAIRE PHOTOMETRIC TEST REPORT

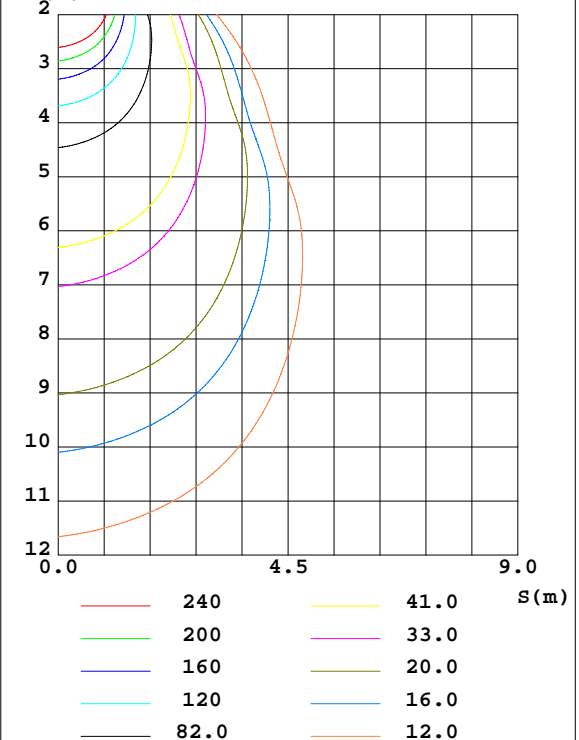
Test:U:229.68V I:0.2654A P:59.269W PF:0.9724 Freq:49.99Hz Lamp Flux:8221.92x1 lm		
NAME:	TYPE:	WEIGHT:
SPEC.:	DIM.: 1200*200*35	SERIAL No.:
MFR.:	SUR.:1.15*0.15	Shielding Angle:

DATA OF LAMP		PHOTOMETRIC DATA Eff: 138.72 lm/W			
MODEL		Imax(cd)	1833	S/MH(C0/180)	1.22
NOMINAL POWER(W)	60	LOR(%)	100.0	S/MH(C90/270)	1.15
RATED VOLTAGE(V)	230.0	TOTAL FLUX(lm)	8221.9	$\eta$ UP,DN(C0-180)	31.5,19.0
NOMINAL FLUX(lm)	8221.92	CIE CLASS	SEMI-IND.	$\eta$ UP,DN(C180-360)	30.7,18.8
LAMPS INSIDE	1	$\eta$ up(%)	62.2	CIBSE SHR NOM	1.00
TEST VOLTAGE(V)	230.0	$\eta$ down(%)	37.8	CIBSE SHR MAX	1.15

LUMINOUS INTENSITY DISTRIBUTION DIAGRAM



C0 PLANE ISOLUX DIAGRAM (UNIT:lx)



C Range: 0 - 360DEG  
C Interval: 5.0DEG  
Test Speed: MEDIUM  
Temperature:25.3DEG  
Operators:  
Test Date:2024-11-10

$\gamma$  Range: 0 - 180DEG  
 $\gamma$  Interval: 0.5DEG  
Test System:EVERFINE GO-2000\_V1 SYSTEM V2.0.406.10  
Humidity:65.0%  
Test Distance:11.700m [K=0.8547]  
Remarks:

## ZONAL FLUX DIAGRAM

## ZONAL FLUX DIAGRAM:

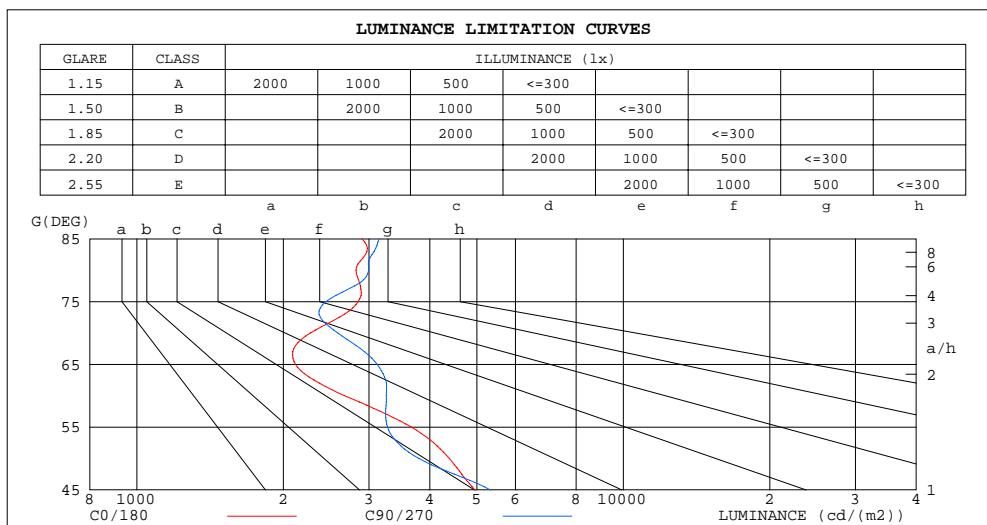
$\gamma$	C0	C45	C90	C135	C180	C225	C270	C315	$\gamma$	$\Phi$ zone	$\Phi$ total	$\Phi$ lum, lamp
10	1559	1564	1596	1639	1676	1644	1594	1557	0- 10	154.0	154.0	1.87,1.87
20	1422	1435	1491	1567	1623	1568	1482	1424	10- 20	441.3	595.3	7.24,7.24
30	1168	1181	1237	1309	1359	1309	1228	1171	20- 30	636.8	1232	15,15
40	831.4	836.7	863.1	920.2	972.6	922.8	862.7	820.6	30- 40	670.3	1902	23.1,23.1
50	486.5	466.2	421.3	500.5	556.3	499.7	411.3	454.3	40- 50	498.3	2401	29.2,29.2
60	230.3	286.3	280.9	308.5	245.4	292.4	273.8	277.9	50- 60	327.1	2728	33.2,33.2
70	134.2	159.7	152.7	168.8	150.0	173.9	141.3	165.2	60- 70	204.9	2933	35.7,35.7
80	84.51	79.59	89.74	77.35	87.84	80.55	92.58	77.98	70- 80	128.7	3061	37.2,37.2
90	1.856	2.552	2.689	2.294	2.672	2.380	1.933	1.985	80- 90	47.27	3109	37.8,37.8
100	33.23	30.74	143.0	32.91	36.12	31.49	118.4	29.55	90-100	29.33	3138	38.2,38.2
110	439.3	478.7	494.2	445.4	390.1	419.6	445.5	444.8	100-110	231.7	3370	41,41
120	847.3	846.6	856.6	815.2	805.0	777.7	801.2	804.8	110-120	631.9	4002	48.7,48.7
130	1164	1161	1165	1137	1128	1093	1108	1122	120-130	878.1	4880	59.3,59.3
140	1415	1411	1410	1397	1386	1350	1358	1378	130-140	978.0	5858	71.2,71.2
150	1603	1598	1598	1591	1582	1549	1551	1573	140-150	932.4	6790	82.6,82.6
160	1735	1725	1726	1725	1720	1691	1691	1711	150-160	762.3	7552	91.9,91.9
170	1811	1795	1799	1800	1803	1777	1781	1793	160-170	497.1	8050	97.9,97.9
180	1832	1832	1832	1832	1832	1832	1832	1832	170-180	172.4	8222	100,100
DEG	LUMINOUS INTENSITY:cd									UNIT:lm		

C Range: 0 - 360DEG  
C Interval: 5.0DEG  
Test Speed: MEDIUM  
Temperature:25.3DEG  
Operators:  
Test Date:2024-11-10

$\gamma$  Range: 0 - 180DEG  
 $\gamma$  Interval: 0.5DEG  
 $\gamma$  Test System:EVERFINE GO-2000\_V1 SYSTEM V2.0.406.10  
Humidity:65.0%  
Test Distance:11.700m [K=0.8547]  
Remarks:

## LUMINANCE LIMITATION CURVES

Test:U:229.68V I:0.2654A P:59.269W PF:0.9724 Freq:49.99Hz Lamp Flux:8221.92x1 lm		
NAME:	TYPE:	WEIGHT:
SPEC.:	DIM.: 1200*200*35	SERIAL No.:
MFR.:	SUR.:1.15*0.15	Shielding Angle:



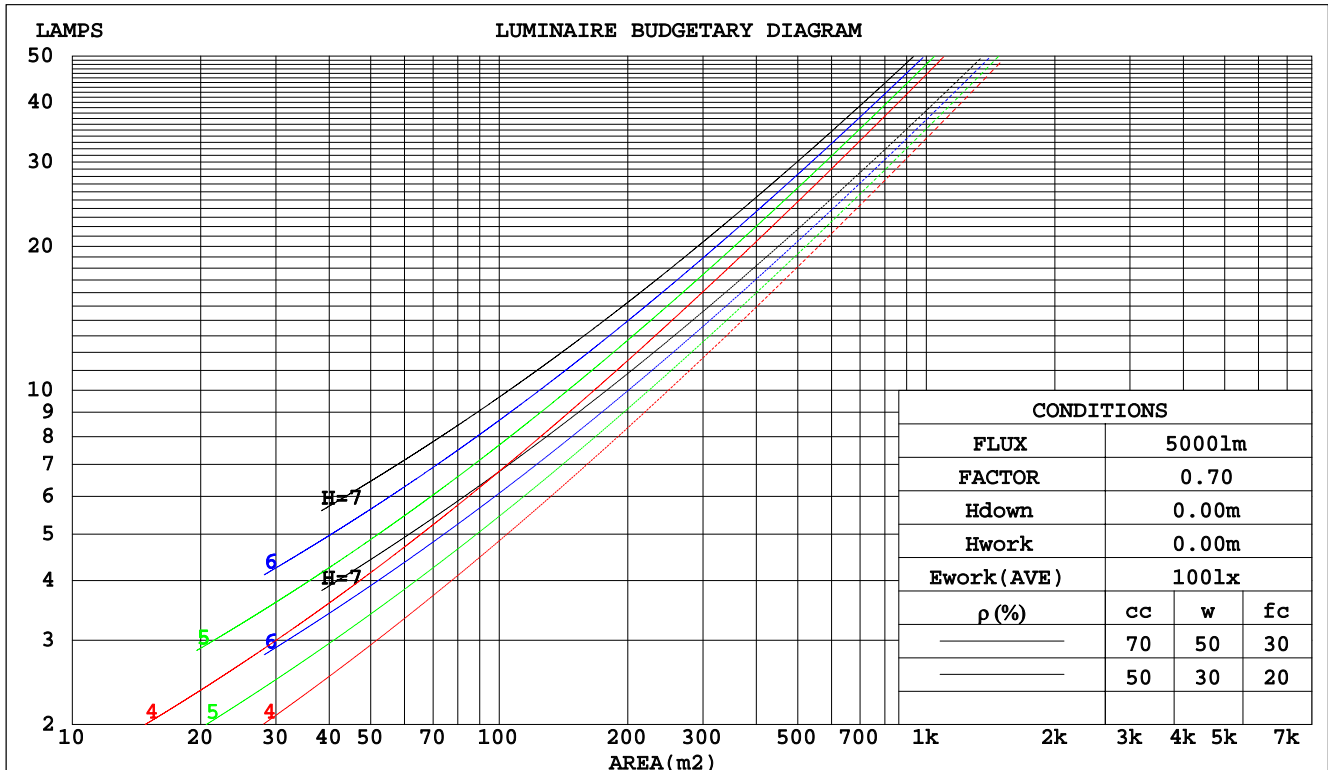
C Range: 0 - 360DEG  
C Interval: 5.0DEG  
Test Speed: MEDIUM  
Temperature:25.3DEG  
Operators:  
Test Date:2024-11-10

γ Range: 0 - 180DEG  
γ Interval: 0.5DEG  
Test System:EVERFINE GO-2000\_V1 SYSTEM V2.0.406.10  
Humidity:65.0%  
Test Distance:11.700m [K=0.8547]  
Remarks:

## CU AND LUMINAIRE BUDGETARY ESTIMATE DIAGRAM

Test:U:229.68V I:0.2654A P:59.269W PF:0.9724 Freq:49.99Hz Lamp Flux:8221.92x1 lm		
NAME:	TYPE:	WEIGHT:
SPEC.:	DIM.: 1200*200*35	SERIAL No.:
MFR.:	SUR.:1.15*0.15	Shielding Angle:

pcc	80%			70%			50%			30%			10%			0
pw	50%	30%	10%	50%	30%	10%	50%	30%	10%	50%	30%	10%	50%	30%	10%	0
pfc	20%			20%			20%			20%			20%			0
RCR	RCR:Room Cavity Ratio						Coefficients of Utilization(CU)									
0.0	1.04	1.04	1.04	.95	.95	.95	.77	.77	.77	.60	.60	.60	.45	.45	.45	.38
1.0	.92	.88	.85	.83	.80	.78	.68	.66	.64	.54	.52	.51	.41	.40	.39	.33
2.0	.81	.75	.70	.74	.69	.65	.60	.57	.54	.48	.46	.44	.36	.35	.34	.29
3.0	.71	.65	.59	.65	.59	.55	.54	.50	.46	.43	.40	.38	.33	.31	.30	.25
4.0	.64	.56	.51	.58	.52	.47	.48	.44	.40	.39	.35	.33	.30	.28	.26	.22
5.0	.57	.49	.44	.52	.46	.41	.43	.39	.35	.35	.32	.29	.27	.25	.23	.20
6.0	.51	.44	.38	.47	.41	.36	.39	.34	.31	.32	.28	.26	.25	.23	.21	.18
7.0	.47	.39	.34	.43	.36	.32	.36	.31	.27	.29	.26	.23	.23	.21	.19	.16
8.0	.42	.35	.30	.39	.33	.28	.33	.28	.24	.27	.23	.21	.21	.19	.17	.15
9.0	.39	.32	.27	.36	.30	.25	.30	.25	.22	.25	.21	.19	.20	.17	.15	.13
10.0	.36	.29	.24	.33	.27	.23	.28	.23	.20	.23	.19	.17	.18	.16	.14	.12



C Range: 0 - 360DEG  
C Interval: 5.0DEG  
Test Speed: MEDIUM  
Temperature:25.3DEG  
Operators:  
Test Date:2024-11-10

γ Range: 0 - 180DEG  
γ Interval: 0.5DEG  
Test System:EVERFINE GO-2000\_V1 SYSTEM V2.0.406.10  
Humidity:65.0%  
Test Distance:11.700m [K=0.8547]  
Remarks:

## WEC AND CCEC

Test:U:229.68V I:0.2654A P:59.269W PF:0.9724 Freq:49.99Hz Lamp Flux:8221.92x1 lm								
NAME:			TYPE:			WEIGHT:		
SPEC.:			DIM.: 1200*200*35			SERIAL No.:		
MFR.:			SUR.:1.15*0.15			Shielding Angle:		

pcc	80%			70%			50%			30%			10%			0	
pw	50%	30%	10%	50%	30%	10%	50%	30%	10%	50%	30%	10%	50%	30%	10%	0	
pfc	20%			20%			20%			20%			20%			0	
RCR	RCR:Room Cavity Ratio						Wall Exitance Coefficients(WEC)										
0.0																	
1.0	.260	.148	.047	.234	.133	.042	.186	.107	.034	.142	.082	.026	.101	.058	.019		
2.0	.241	.132	.041	.218	.120	.037	.174	.097	.030	.133	.075	.023	.096	.054	.017		
3.0	.224	.119	.036	.202	.108	.033	.162	.088	.027	.125	.068	.021	.090	.050	.015		
4.0	.208	.108	.032	.188	.098	.029	.151	.080	.024	.117	.063	.019	.085	.046	.014		
5.0	.193	.099	.029	.175	.090	.026	.141	.074	.022	.110	.058	.017	.080	.043	.013		
6.0	.181	.091	.026	.164	.083	.024	.132	.068	.020	.103	.053	.016	.075	.040	.012		
7.0	.169	.084	.024	.154	.077	.022	.124	.063	.018	.097	.050	.014	.071	.037	.011		
8.0	.159	.078	.022	.145	.071	.020	.117	.059	.017	.091	.046	.013	.067	.035	.010		
9.0	.150	.072	.020	.136	.066	.019	.111	.055	.016	.087	.043	.012	.064	.032	.009		
10.0	.141	.068	.019	.129	.062	.017	.105	.051	.014	.082	.041	.012	.061	.031	.009		

pcc	80%			70%			50%			30%			10%			0
pw	50%	30%	10%	50%	30%	10%	50%	30%	10%	50%	30%	10%	50%	30%	10%	0
pfc	20%			20%			20%			20%			20%			0
RCR	RCR:Room Cavity Ratio						Ceiling Cavity Exitance Coefficients(CCEC)									
0.0	.664	.664	.664	.568	.568	.568	.388	.388	.388	.223	.223	.223	.071	.071	.071	
1.0	.655	.634	.616	.560	.544	.530	.383	.375	.367	.221	.217	.213	.071	.070	.069	
2.0	.646	.613	.585	.554	.528	.506	.379	.365	.353	.219	.212	.207	.070	.069	.067	
3.0	.639	.598	.564	.548	.515	.489	.376	.358	.343	.217	.209	.202	.070	.068	.066	
4.0	.632	.586	.550	.543	.506	.478	.373	.353	.337	.216	.207	.199	.069	.067	.065	
5.0	.626	.577	.540	.538	.499	.470	.370	.348	.332	.215	.205	.197	.069	.067	.065	
6.0	.620	.569	.533	.533	.493	.464	.368	.345	.328	.213	.203	.195	.069	.066	.064	
7.0	.614	.563	.527	.528	.488	.459	.365	.342	.326	.212	.202	.194	.069	.066	.064	
8.0	.609	.558	.523	.524	.484	.456	.363	.340	.324	.211	.200	.193	.068	.066	.064	
9.0	.604	.554	.520	.520	.481	.454	.360	.338	.322	.210	.200	.192	.068	.065	.064	
10.0	.599	.550	.517	.517	.478	.451	.358	.336	.321	.209	.199	.191	.068	.065	.063	

C Range: 0 - 360DEG  
 C Interval: 5.0DEG  
 Test Speed: MEDIUM  
 Temperature:25.3DEG  
 Operators:  
 Test Date:2024-11-10

γ Range: 0 - 180DEG  
 γ Interval: 0.5DEG  
 Test System:EVERFINE GO-2000\_V1 SYSTEM V2.0.406.10  
 Humidity:65.0%  
 Test Distance:11.700m [K=0.8547]  
 Remarks:

UGR(Unified Glare Rating) Table

Test:U:229.68V I:0.2654A P:59.269W PF:0.9724 Freq:49.99Hz Lamp Flux:8221.92x1 lm										
NAME:			TYPE:			WEIGHT:				
SPEC.:			DIM.: 1200*200*35			SERIAL No.:				
MFR.:			SUR.:1.15*0.15			Shielding Angle:				
ceiling/cavity	0.7	0.7	0.5	0.5	0.3	0.7	0.7	0.5	0.5	0.3
walls	0.5	0.3	0.5	0.3	0.3	0.5	0.3	0.5	0.3	0.3
working plane	0.2	0.2	0.2	0.2	0.2	0.2	0.2	0.2	0.2	0.2
Room dimensions	Viewed crosswise					Viewed endwise				
x = 2H y = 2H	11.6	12.4	12.5	13.3	14.6	12.1	12.9	13.1	13.9	15.2
3H	12.3	13.0	13.3	14.0	15.3	12.8	13.6	13.8	14.5	15.8
4H	12.7	13.4	13.8	14.4	15.7	13.2	13.8	14.2	14.8	16.1
6H	13.2	13.8	14.2	14.8	16.2	13.6	14.2	14.6	15.2	16.5
8H	13.4	14.0	14.4	15.0	16.3	13.8	14.3	14.8	15.4	16.7
12H	13.5	14.1	14.6	15.1	16.5	13.9	14.4	14.9	15.5	16.8
4H 2H	11.8	12.5	12.8	13.5	14.8	12.2	12.9	13.2	13.9	15.2
3H	12.7	13.3	13.8	14.3	15.7	13.1	13.7	14.2	14.7	16.1
4H	13.3	13.8	14.4	14.8	16.2	13.6	14.1	14.7	15.2	16.6
6H	13.9	14.3	15.0	15.4	16.8	14.2	14.6	15.3	15.7	17.1
8H	14.1	14.5	15.2	15.6	17.0	14.5	14.9	15.5	15.9	17.4
12H	14.3	14.7	15.4	15.8	17.2	14.7	15.0	15.8	16.1	17.5
8H 4H	13.4	13.8	14.5	14.9	16.3	13.7	14.1	14.8	15.2	16.6
6H	14.2	14.5	15.3	15.6	17.0	14.5	14.8	15.5	15.9	17.3
8H	14.5	14.8	15.6	15.9	17.4	14.8	15.1	15.9	16.2	17.7
12H	14.8	15.1	15.9	16.2	17.6	15.2	15.4	16.3	16.5	18.0
12H 4H	13.4	13.7	14.5	14.8	16.3	13.7	14.0	14.8	15.1	16.6
6H	14.2	14.5	15.3	15.6	17.1	14.5	14.8	15.6	15.8	17.3
8H	14.6	14.8	15.7	15.9	17.4	14.9	15.1	16.0	16.2	17.7
Variations with the observer position at spacings:										
S = 1.0H	+ 0.3 / - 0.4					+ 0.3 / - 0.5				
1.5H	+ 0.3 / - 0.2					+ 0.3 / - 0.5				
2.0H	+ 0.4 / - 0.6					+ 0.6 / - 0.5				

CIE Pub.117, 8222 lm Total Lamp Luminous Flux Corrected ( $8\log(F/F_0) = 7.3$ )

C Range: 0 - 360DEG  
 C Interval: 5.0DEG  
 Test Speed: MEDIUM  
 Temperature:25.3DEG  
 Operators:  
 Test Date:2024-11-10

γ Range: 0 - 180DEG  
 γ Interval: 0.5DEG  
 Test System:EVERFINE GO-2000\_V1 SYSTEM V2.0.406.10  
 Humidity:65.0%  
 Test Distance:11.700m [K=0.8547]  
 Remarks:

## UTILIZATION FACTORS TABLE

Test:U:229.68V I:0.2654A P:59.269W PF:0.9724 Freq:49.99Hz Lamp Flux:8221.92x1 lm		
NAME:	TYPE:	WEIGHT:
SPEC.:	DIM.: 1200*200*35	SERIAL No.:
MFR.:	SUR.:1.15*0.15	Shielding Angle:

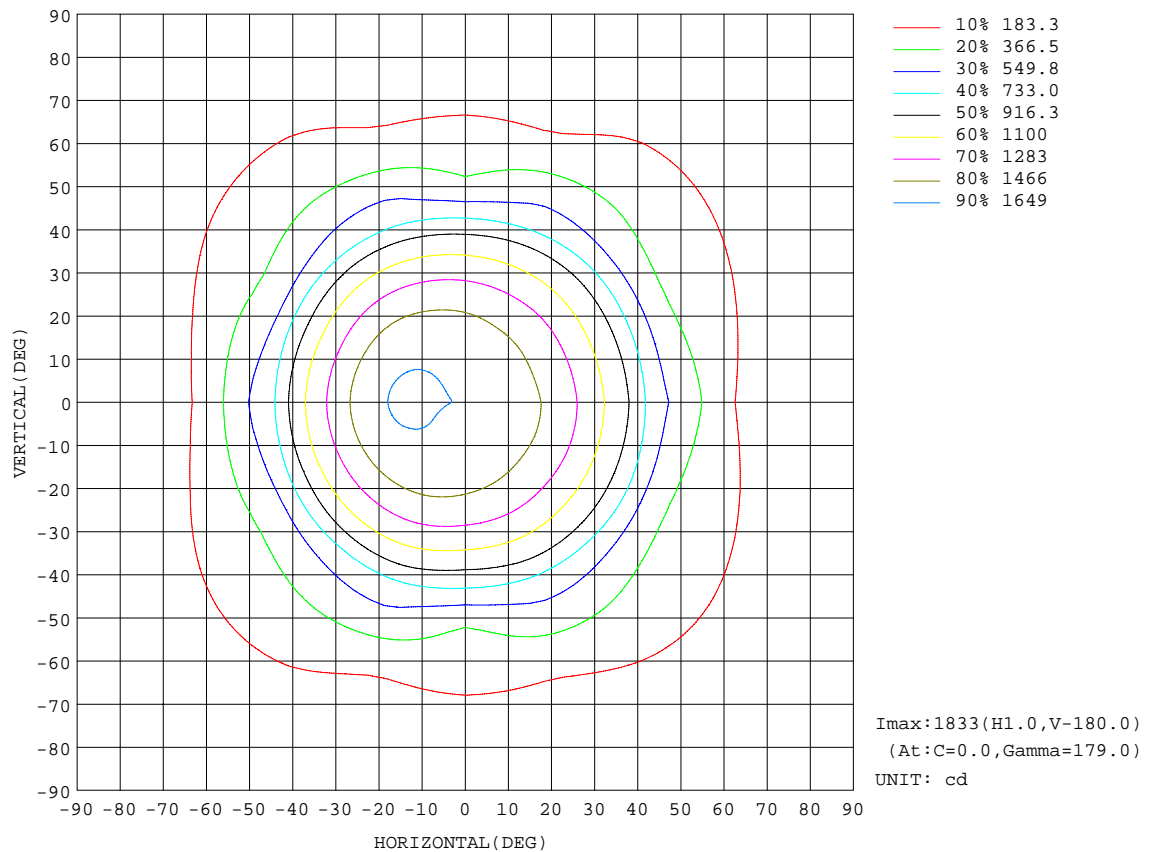
REFLECTANCE										
Ceiling	0.8	0.8	0.8	0.7	0.7	0.7	0.5	0.5	0.5	0
Walls	0.7	0.5	0.3	0.7	0.5	0.3	0.7	0.5	0.3	0
Working plane	0.2	0.2	0.2	0.2	0.2	0.2	0.2	0.2	0.2	0
ROOM INDEX	UTILIZATION FACTORS(PERCENT) $k(RI) \times RCR = 5$									
$k = 0.60$	44	34	29	42	33	27	36	29	25	17
0.80	54	43	36	50	40	35	43	36	31	21
1.00	61	50	43	56	47	41	48	42	36	24
1.25	67	57	50	62	53	47	52	46	41	26
1.50	72	62	56	66	58	52	55	49	45	28
2.00	79	70	64	72	65	59	60	55	51	30
2.50	83	75	69	76	69	64	63	58	54	31
3.00	86	79	73	79	73	68	65	61	57	32
4.00	90	84	80	82	77	73	67	64	61	33
5.00	93	88	84	85	80	77	69	66	64	34
ROOM INDEX	UF(total)									Direct
According to DIN EN 13032-2 2004			Suspended					SHRNOM = 1.25		

C Range: 0 - 360DEG  
 C Interval: 5.0DEG  
 Test Speed: MEDIUM  
 Temperature:25.3DEG  
 Operators:  
 Test Date:2024-11-10

γ Range: 0 - 180DEG  
 γ Interval: 0.5DEG  
 Test System:EVERFINE GO-2000\_V1 SYSTEM V2.0.406.10  
 Humidity:65.0%  
 Test Distance:11.700m [K=0.8547]  
 Remarks:

## ISOCANDELA DIAGRAM

Test:U:229.68V I:0.2654A P:59.269W PF:0.9724 Freq:49.99Hz Lamp Flux:8221.92x1 lm		
NAME:	TYPE:	WEIGHT:
SPEC.:	DIM.: 1200*200*35	SERIAL No.:
MFR.:	SUR.:1.15*0.15	Shielding Angle:



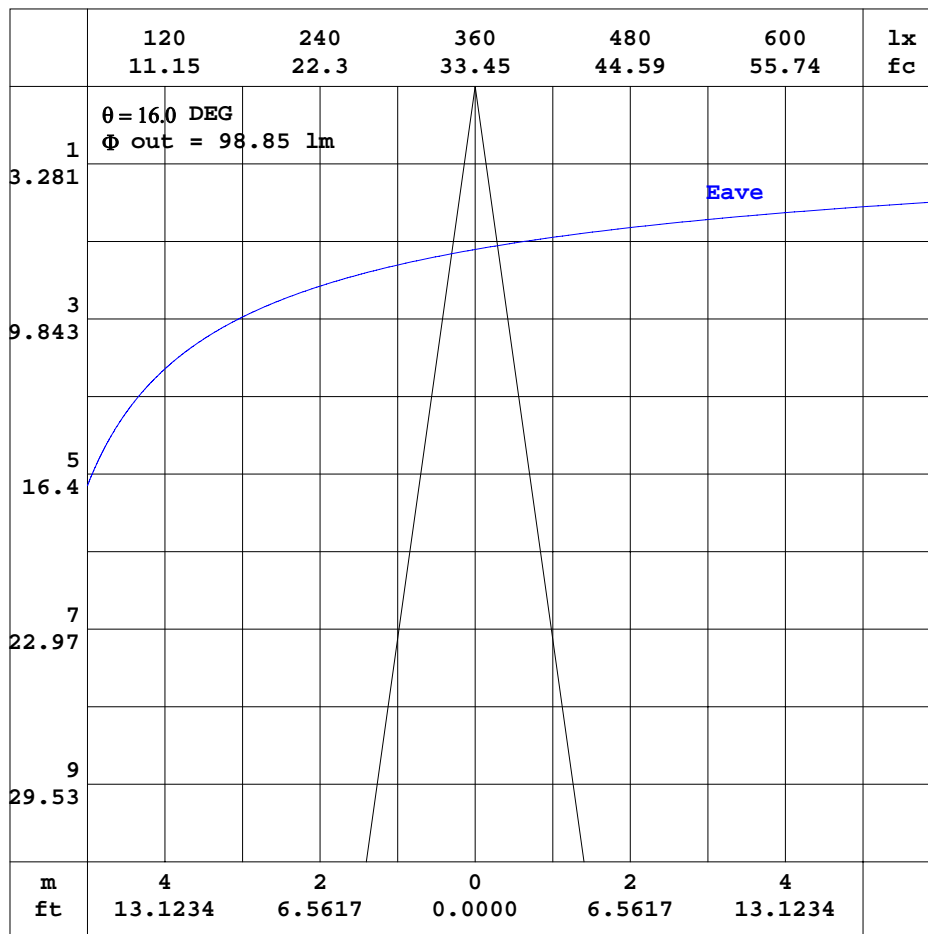
C Range: 0 - 360DEG  
C Interval: 5.0DEG  
Test Speed: MEDIUM  
Temperature:25.3DEG  
Operators:  
Test Date:2024-11-10

$\gamma$  Range: 0 - 180DEG  
 $\gamma$  Interval: 0.5DEG  
Test System:EVERFINE GO-2000\_V1 SYSTEM V2.0.406.10  
Humidity:65.0%  
Test Distance:11.700m [K=0.8547]  
Remarks:



## AAI CURVES

Test:U:229.68V I:0.2654A P:59.269W PF:0.9724 Freq:49.99Hz Lamp Flux:8221.92x1 lm		
NAME:	TYPE:	WEIGHT:
SPEC.:	DIM.: 1200*200*35	SERIAL No.:
MFR.:	SUR.:1.15*0.15	Shielding Angle:



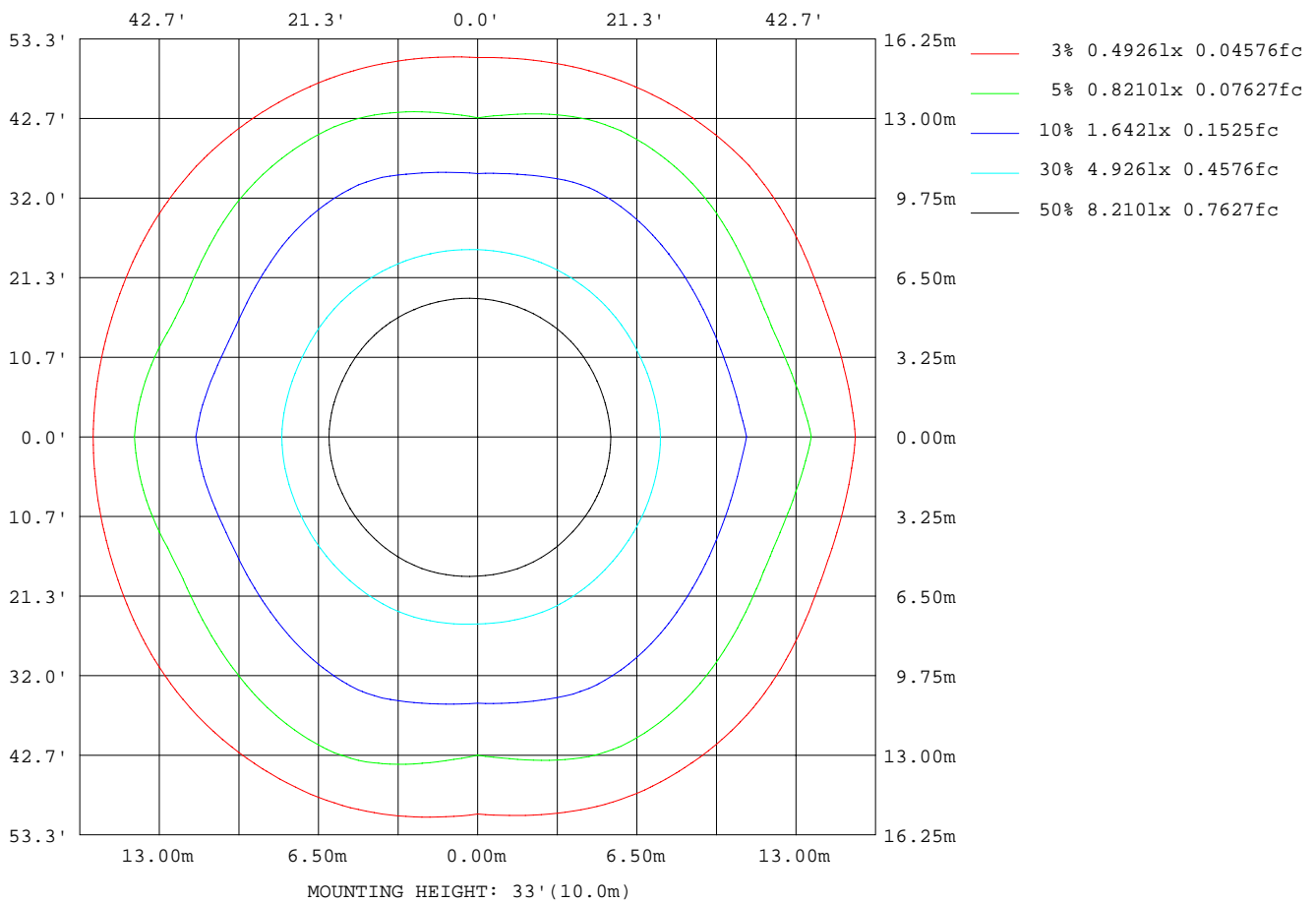
Note:The Curves indicate the illuminated area and the average illumination when the luminaire is at different distance.

C Range: 0 - 360DEG  
C Interval: 5.0DEG  
Test Speed: MEDIUM  
Temperature:25.3DEG  
Operators:  
Test Date:2024-11-10

$\gamma$  Range: 0 - 180DEG  
 $\gamma$  Interval: 0.5DEG  
Test System:EVERFINE GO-2000\_V1 SYSTEM V2.0.406.10  
Humidity:65.0%  
Test Distance:11.700m [K=0.8547]  
Remarks:

## ISOLUX DIAGRAM

Test:U:229.68V I:0.2654A P:59.269W PF:0.9724 Freq:49.99Hz Lamp Flux:8221.92x1 lm		
NAME:	TYPE:	WEIGHT:
SPEC.:	DIM.: 1200*200*35	SERIAL No.:
MFR.:	SUR.:1.15*0.15	Shielding Angle:



C Range: 0 - 360DEG  
C Interval: 5.0DEG  
Test Speed: MEDIUM  
Temperature: 25.3DEG  
Operators:  
Test Date: 2024-11-10

$\gamma$  Range: 0 - 180DEG  
 $\gamma$  Interval: 0.5DEG  
Test System: EVERFINE GO-2000\_V1 SYSTEM V2.0.406.10  
Humidity: 65.0%  
Test Distance: 11.700m [K=0.8547]  
Remarks:

## LED Avg.L Report

Test:U:229.68V I:0.2654A P:59.269W PF:0.9724 Freq:49.99Hz Lamp Flux:8221.92x1 lm		
NAME:	TYPE:	WEIGHT:
SPEC.:	DIM.: 1200*200*35	SERIAL No.:
MFR.:	SUR.:1.15*0.15	Shielding Angle:

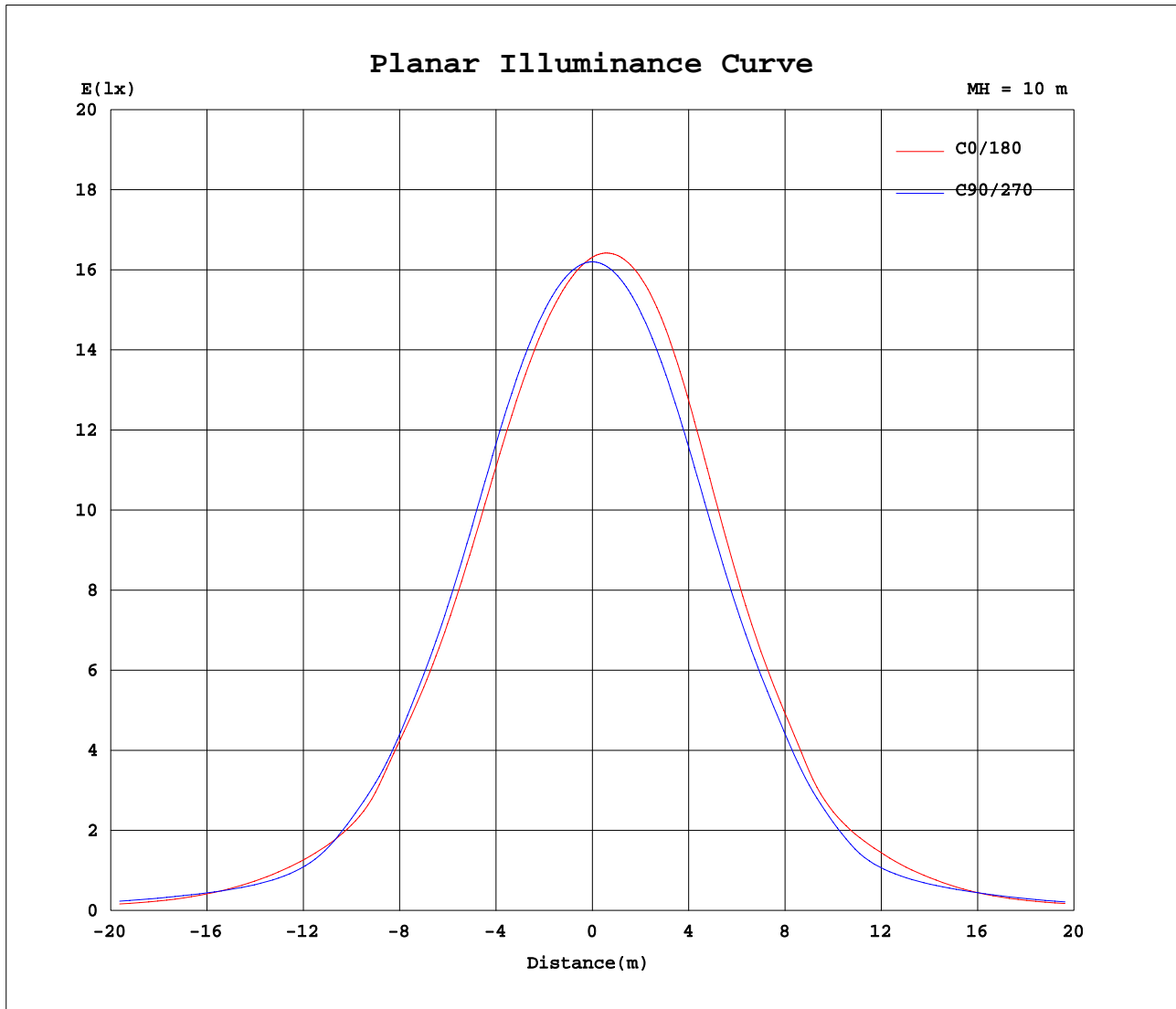
AvgL	cd/m2
L_0~180(65)av	2186
L_0~180(75)av	3012
L_0~180(85)av	3034
L_90~270(65)av	2979
L_90~270(75)av	2547
L_90~270(85)av	3002
L_45(65)av	3028
L_45(75)av	2775
L_45(85)av	3004

Standard: GB/T 29293-2012

C Range: 0 - 360DEG  
C Interval: 5.0DEG  
Test Speed: MEDIUM  
Temperature:25.3DEG  
Operators:  
Test Date:2024-11-10

γ Range: 0 - 180DEG  
γ Interval: 0.5DEG  
Test System:EVERFINE GO-2000\_V1 SYSTEM V2.0.406.10  
Humidity:65.0%  
Test Distance:11.700m [K=0.8547]  
Remarks:

## Planar Illuminance Curve



C Range: 0 - 360DEG  
C Interval: 5.0DEG  
Test Speed: MEDIUM  
Temperature: 25.3DEG  
Operators:  
Test Date: 2024-11-10

$\gamma$  Range: 0 - 180DEG  
 $\gamma$  Interval: 0.5DEG  
Test System: EVERFINE GO-2000\_V1 SYSTEM V2.0.406.10  
Humidity: 65.0%  
Test Distance: 11.700m [K=0.8547]  
Remarks:

## LUMINOUS DISTRIBUTION INTENSITY DATA

Test:U:229.68V I:0.2654A P:59.269W PF:0.9724 Freq:49.99Hz Lamp Flux:8221.92x1 lm																	
NAME:									TYPE:						WEIGHT:		
SPEC.:									DIM.: 1200*200*35						SERIAL No.:		
MFR.:									SUR.:1.15*0.15						Shielding Angle:		

Table--1

UNIT: cd

C(DEG) γ (DEG)	0	5	10	15	20	25	30	35	40	45	50	55	60	65	70	75	80	85	90
0	1632	1631	1630	1629	1629	1628	1627	1626	1625	1624	1624	1623	1623	1622	1622	1622	1621	1621	1620
5	1598	1598	1597	1597	1597	1597	1597	1598	1598	1599	1600	1602	1603	1605	1607	1608	1610	1612	1614
10	1559	1558	1558	1559	1559	1560	1560	1561	1562	1564	1566	1569	1572	1576	1580	1583	1587	1592	1596
15	1504	1504	1505	1506	1506	1507	1508	1510	1511	1513	1517	1521	1525	1530	1535	1541	1546	1552	1558
20	1422	1423	1424	1425	1426	1428	1429	1430	1432	1435	1439	1444	1450	1456	1462	1469	1476	1483	1491
25	1308	1308	1309	1310	1312	1313	1314	1316	1318	1322	1327	1334	1341	1348	1355	1361	1368	1374	1382
30	1168	1167	1167	1167	1168	1169	1171	1173	1177	1181	1188	1195	1203	1211	1217	1222	1226	1232	1237
35	1015	1013	1011	1011	1011	1013	1015	1018	1021	1026	1033	1041	1049	1056	1061	1064	1066	1069	1073
40	831	828	825	823	823	824	825	828	832	837	844	852	860	866	868	866	864	862	863
45	604	596	590	585	583	584	587	592	599	606	617	629	640	649	654	653	652	650	650
50	487	453	428	410	400	401	412	428	446	466	484	499	511	518	508	484	459	437	421
55	363	344	330	320	315	317	325	335	348	361	374	385	393	398	390	372	353	336	324
60	230	238	245	252	259	265	272	278	283	286	286	285	284	282	281	280	280	280	281
65	154	173	189	201	211	217	220	221	219	216	210	204	198	194	196	204	213	221	227
70	134	140	145	149	152	155	157	159	160	160	158	156	154	152	151	151	152	152	153
75	127	123	119	117	115	114	115	116	117	119	122	125	127	128	126	122	117	113	109
80	84.5	84.2	83.9	83.5	83.0	82.3	81.4	80.6	79.9	79.6	80.3	81.2	82.4	83.8	85.2	86.7	88.0	89.0	89.7
85	43.6	43.4	43.3	43.3	43.4	43.6	43.8	44.2	44.6	45.2	46.2	47.2	48.2	49.0	49.2	48.9	48.3	47.8	47.3
90	1.86	1.91	1.97	2.03	2.10	2.18	2.27	2.36	2.46	2.55	2.65	2.75	2.82	2.88	2.89	2.84	2.78	2.73	2.69
95	17.5	17.4	17.4	17.5	17.7	18.1	18.6	19.0	19.4	19.7	18.6	17.6	16.9	16.9	19.5	24.4	29.5	33.9	37.2
100	33.2	32.9	32.7	32.4	32.1	29.8	26.1	24.2	25.4	30.7	53.0	78.4	104	129	144	148	149	147	143
105	49.1	41.6	42.8	52.6	71.1	105	153	203	251	293	303	305	302	295	292	293	295	296	296
110	439	449	458	465	471	475	477	478	479	479	479	480	481	482	484	488	491	493	494
115	670	669	667	666	666	665	664	663	662	662	663	664	665	667	671	676	680	684	686
120	847	845	844	843	842	842	843	844	846	847	846	846	846	846	848	851	853	855	857
125	1013	1010	1008	1007	1007	1008	1009	1011	1013	1015	1014	1013	1012	1012	1012	1014	1016	1017	1018
130	1164	1162	1160	1159	1159	1158	1159	1160	1161	1161	1161	1161	1161	1161	1161	1163	1164	1165	1165
135	1299	1296	1293	1292	1291	1291	1291	1292	1294	1295	1294	1293	1292	1291	1292	1294	1296	1298	1299
140	1415	1412	1409	1407	1406	1406	1407	1408	1410	1411	1412	1411	1411	1411	1411	1411	1411	1411	1410
145	1516	1512	1509	1507	1506	1506	1507	1509	1511	1512	1512	1512	1512	1511	1512	1512	1513	1513	1513
150	1603	1599	1596	1593	1591	1591	1592	1594	1596	1598	1598	1598	1597	1597	1597	1597	1597	1598	1598
155	1676	1672	1668	1665	1663	1663	1664	1665	1667	1669	1669	1668	1668	1668	1667	1668	1668	1668	1669
160	1735	1730	1726	1723	1720	1720	1721	1722	1724	1725	1725	1725	1724	1724	1724	1724	1725	1725	1726
165	1780	1774	1770	1766	1764	1763	1763	1765	1766	1767	1767	1767	1767	1767	1767	1767	1768	1768	1769
170	1811	1805	1800	1796	1793	1792	1792	1793	1794	1795	1796	1796	1796	1796	1796	1797	1798	1798	1799
175	1828	1821	1816	1812	1809	1807	1807	1808	1809	1810	1810	1811	1811	1811	1811	1812	1813	1813	1814
180	1832	1832	1832	1832	1832	1832	1832	1832	1832	1832	1832	1832	1832	1832	1832	1832	1832	1832	1832

C Range: 0 - 360DEG  
C Interval: 5.0DEG  
Test Speed: MEDIUM  
Temperature:25.3DEG  
Operators:  
Test Date:2024-11-10

γ Range: 0 - 180DEG  
γ Interval: 0.5DEG  
Test System:EVERFINE GO-2000\_V1 SYSTEM V2.0.406.10  
Humidity:65.0%  
Test Distance:11.700m [K=0.8547]  
Remarks:

## LUMINOUS DISTRIBUTION INTENSITY DATA

Test:U:229.68V I:0.2654A P:59.269W PF:0.9724 Freq:49.99Hz Lamp Flux:8221.92x1 lm																		
NAME:									TYPE:					WEIGHT:				
SPEC.:									DIM.: 1200*200*35					SERIAL No.:				
MFR.:									SUR.:1.15*0.15					Shielding Angle:				

Table--2

UNIT: cd

C(DEG) γ (DEG)	95	100	105	110	115	120	125	130	135	140	145	150	155	160	165	170	175	180	185
0	1620	1619	1619	1619	1618	1618	1618	1618	1618	1617	1617	1616	1617	1619	1622	1625	1629	1632	1632
5	1617	1619	1621	1624	1626	1628	1631	1633	1635	1636	1637	1639	1641	1644	1648	1652	1656	1659	1659
10	1601	1606	1611	1616	1621	1626	1631	1635	1639	1643	1647	1650	1654	1658	1664	1669	1673	1676	1675
15	1565	1573	1580	1587	1595	1602	1609	1615	1622	1628	1634	1640	1646	1652	1658	1664	1668	1671	1670
20	1499	1508	1517	1526	1534	1543	1551	1559	1567	1575	1582	1589	1596	1603	1610	1616	1620	1623	1621
25	1391	1401	1411	1420	1429	1437	1445	1452	1459	1467	1475	1482	1489	1496	1503	1509	1513	1515	1513
30	1247	1257	1268	1278	1287	1293	1299	1304	1309	1315	1320	1326	1332	1339	1346	1352	1357	1359	1355
35	1083	1094	1105	1115	1122	1127	1130	1132	1135	1139	1143	1147	1151	1157	1164	1170	1175	1178	1173
40	875	889	903	917	924	925	924	922	920	920	921	923	927	935	946	957	967	973	964
45	658	667	676	683	684	678	670	662	654	652	651	652	655	662	672	683	692	698	690
50	444	473	505	535	548	543	532	517	500	483	467	454	446	457	484	512	538	556	533
55	342	365	390	413	423	420	413	402	390	379	369	361	356	359	370	383	394	403	392
60	281	281	282	284	288	293	299	304	309	309	308	306	301	292	278	265	254	245	252
65	219	209	198	189	189	197	208	219	229	234	235	235	231	221	205	189	175	164	172
70	151	149	147	146	149	153	159	164	169	170	170	168	167	164	160	156	153	150	149
75	112	116	121	126	128	127	126	125	123	122	122	122	123	126	130	135	139	142	138
80	89.5	88.8	87.8	86.5	84.7	82.5	80.3	78.6	77.4	78.4	80.1	82.0	84.1	85.7	86.6	87.2	87.7	87.8	87.7
85	47.6	48.1	48.5	48.9	48.8	48.4	47.8	47.2	46.5	46.0	45.7	45.4	45.3	45.6	46.2	46.8	47.4	47.7	46.7
90	2.79	2.90	3.00	3.07	3.03	2.86	2.66	2.47	2.29	2.26	2.26	2.29	2.34	2.41	2.48	2.56	2.62	2.67	2.65
95	34.2	30.1	25.3	20.6	18.1	18.0	18.6	19.5	20.5	20.2	19.8	19.3	18.8	18.5	18.5	18.6	18.6	18.6	18.4
100	144	144	141	135	121	98.5	75.1	52.5	32.9	28.4	27.6	29.6	33.2	35.5	35.8	36.0	36.1	36.1	35.9
105	294	291	287	284	283	285	284	278	265	224	178	131	86.2	57.9	47.0	42.8	43.7	48.1	46.2
110	491	486	481	475	468	462	456	450	445	443	441	439	436	429	417	406	397	390	396
115	682	676	669	662	654	647	640	634	629	627	626	626	626	626	626	626	625	625	623
120	854	851	846	841	836	830	825	820	815	812	810	808	806	806	806	806	806	805	803
125	1016	1013	1010	1006	1002	998	994	990	986	983	980	977	975	974	974	974	973	973	970
130	1164	1161	1159	1156	1152	1149	1145	1141	1137	1135	1133	1132	1131	1130	1130	1130	1129	1128	1125
135	1298	1295	1292	1289	1286	1283	1281	1279	1276	1274	1272	1270	1269	1268	1268	1268	1267	1266	1262
140	1409	1408	1407	1405	1404	1402	1401	1399	1397	1395	1393	1391	1389	1388	1388	1388	1388	1386	1381
145	1512	1511	1510	1508	1507	1506	1505	1503	1502	1500	1498	1496	1494	1493	1493	1493	1493	1491	1486
150	1597	1596	1595	1594	1593	1593	1593	1592	1591	1589	1588	1586	1584	1583	1584	1584	1583	1582	1577
155	1668	1667	1667	1666	1666	1666	1666	1666	1665	1664	1663	1661	1660	1659	1660	1660	1659	1658	1653
160	1725	1725	1724	1724	1724	1724	1724	1725	1725	1724	1723	1722	1721	1721	1722	1722	1722	1720	1715
165	1769	1768	1768	1768	1768	1769	1769	1770	1770	1770	1769	1769	1768	1769	1770	1770	1770	1769	1764
170	1799	1799	1799	1799	1799	1799	1800	1800	1800	1801	1801	1801	1801	1802	1803	1804	1804	1803	1799
175	1814	1814	1815	1815	1816	1816	1817	1817	1818	1818	1819	1819	1820	1821	1823	1824	1824	1824	1820
180	1832	1832	1832	1832	1832	1832	1832	1832	1832	1832	1832	1832	1832	1832	1832	1832	1832	1832	1832

C Range: 0 - 360DEG  
C Interval: 5.0DEG  
Test Speed: MEDIUM  
Temperature:25.3DEG  
Operators:  
Test Date:2024-11-10

γ Range: 0 - 180DEG  
γ Interval: 0.5DEG  
Test System:EVERFINE GO-2000\_V1 SYSTEM V2.0.406.10  
Humidity:65.0%  
Test Distance:11.700m [K=0.8547]  
Remarks:

## LUMINOUS DISTRIBUTION INTENSITY DATA

Test:U:229.68V I:0.2654A P:59.269W PF:0.9724 Freq:49.99Hz Lamp Flux:8221.92x1 lm																		
NAME:									TYPE:					WEIGHT:				
SPEC.:									DIM.: 1200*200*35					SERIAL No.:				
MFR.:									SUR.:1.15*0.15					Shielding Angle:				

Table--3

UNIT: cd

C(DEG) γ (DEG)	190	195	200	205	210	215	220	225	230	235	240	245	250	255	260	265	270	275	280
0	1631	1630	1629	1628	1627	1626	1625	1624	1624	1623	1623	1622	1622	1622	1621	1621	1620	1620	1619
5	1657	1656	1653	1651	1649	1646	1644	1641	1638	1635	1632	1629	1626	1623	1620	1617	1614	1611	1608
10	1673	1671	1667	1663	1659	1654	1649	1644	1639	1633	1627	1621	1616	1610	1605	1599	1594	1589	1583
15	1668	1663	1658	1653	1647	1640	1633	1626	1617	1609	1600	1591	1583	1576	1568	1561	1554	1546	1539
20	1618	1613	1606	1600	1593	1585	1577	1568	1558	1547	1537	1526	1516	1507	1498	1490	1482	1472	1463
25	1508	1502	1495	1488	1482	1475	1468	1460	1450	1439	1428	1417	1407	1397	1388	1379	1370	1361	1352
30	1349	1342	1334	1328	1324	1319	1315	1309	1301	1292	1283	1273	1264	1254	1245	1236	1228	1220	1212
35	1166	1158	1150	1144	1141	1139	1136	1133	1128	1123	1116	1109	1102	1094	1085	1077	1069	1063	1057
40	953	941	928	921	920	921	922	923	921	917	913	908	900	891	881	871	863	859	856
45	679	667	655	648	648	649	652	656	661	665	669	671	666	656	645	633	623	623	624
50	503	471	441	431	442	458	479	500	516	528	537	539	524	494	463	433	411	428	451
55	379	364	351	347	353	362	372	383	390	395	398	398	389	374	357	343	331	339	351
60	261	272	283	291	294	295	294	292	288	282	276	271	269	270	271	273	274	270	265
65	183	197	211	220	225	227	227	224	216	207	198	191	189	193	198	203	207	200	192
70	150	151	153	156	161	166	171	174	173	170	167	162	158	153	148	144	141	143	145
75	133	128	123	122	123	125	127	130	132	133	134	134	132	128	124	121	118	121	124
80	87.4	86.8	86.1	85.0	83.7	82.5	81.4	80.6	80.7	81.2	82.1	83.2	85.1	87.5	89.7	91.5	92.6	90.8	88.3
85	45.6	44.5	43.5	43.0	43.3	43.8	44.5	45.3	46.5	47.7	48.7	49.3	48.9	47.4	45.8	44.2	43.0	43.7	44.7
90	2.61	2.56	2.51	2.47	2.44	2.42	2.40	2.38	2.36	2.34	2.31	2.28	2.22	2.14	2.07	1.99	1.93	1.93	1.94
95	18.1	17.8	17.5	17.5	17.8	18.0	18.3	18.4	17.8	17.2	16.8	16.7	18.0	20.5	23.1	25.4	26.9	25.1	22.6
100	35.6	35.2	34.7	32.7	29.5	27.7	28.0	31.5	47.2	65.2	84.0	102	113	117	119	119	118	122	125
105	47.4	53.1	64.2	89.5	128	168	208	242	252	256	255	252	251	254	256	259	261	261	261
110	404	413	422	426	426	424	422	420	420	422	424	426	430	434	438	442	446	447	448
115	621	619	617	613	609	605	602	599	600	601	604	607	611	616	620	625	629	631	632
120	800	796	793	789	786	782	780	778	778	778	780	782	785	789	793	797	801	804	805
125	966	962	959	955	951	948	945	943	943	943	945	946	949	952	955	958	961	964	966
130	1121	1116	1111	1107	1102	1098	1095	1093	1093	1094	1095	1097	1099	1101	1103	1106	1108	1111	1114
135	1257	1251	1246	1241	1237	1233	1231	1229	1229	1229	1231	1232	1234	1235	1236	1238	1240	1243	1246
140	1376	1370	1364	1359	1356	1353	1352	1350	1350	1351	1352	1353	1354	1355	1355	1356	1358	1360	1363
145	1481	1475	1469	1464	1461	1459	1457	1457	1457	1457	1458	1459	1459	1459	1460	1460	1461	1464	1467
150	1571	1565	1559	1555	1552	1551	1549	1549	1549	1549	1549	1550	1550	1550	1550	1550	1551	1553	1556
155	1647	1641	1635	1631	1629	1628	1627	1627	1626	1626	1626	1626	1626	1626	1626	1626	1627	1629	1632
160	1710	1704	1698	1694	1693	1691	1691	1691	1690	1690	1690	1690	1690	1690	1690	1691	1691	1693	1695
165	1759	1753	1747	1744	1742	1741	1741	1741	1740	1740	1740	1740	1740	1741	1741	1742	1742	1744	1745
170	1793	1787	1782	1778	1777	1777	1777	1777	1777	1777	1778	1778	1778	1779	1779	1780	1781	1782	1783
175	1814	1809	1803	1800	1800	1800	1800	1801	1801	1802	1802	1802	1803	1803	1804	1804	1805	1806	1807
180	1832	1832	1832	1832	1832	1832	1832	1832	1832	1832	1832	1832	1832	1832	1832	1832	1832	1832	1832

C Range: 0 - 360DEG  
C Interval: 5.0DEG  
Test Speed: MEDIUM  
Temperature:25.3DEG  
Operators:  
Test Date:2024-11-10

γ Range: 0 - 180DEG  
γ Interval: 0.5DEG  
Test System:EVERFINE GO-2000\_V1 SYSTEM V2.0.406.10  
Humidity:65.0%  
Test Distance:11.700m [K=0.8547]  
Remarks:

## LUMINOUS DISTRIBUTION INTENSITY DATA

Test:U:229.68V I:0.2654A P:59.269W PF:0.9724 Freq:49.99Hz Lamp Flux:8221.92x1 lm																	
NAME:									TYPE:						WEIGHT:		
SPEC.:									DIM.: 1200*200*35						SERIAL No.:		
MFR.:									SUR.:1.15*0.15						Shielding Angle:		

Table--4

UNIT: cd

C(DEG) γ (DEG)	285	290	295	300	305	310	315	320	325	330	335	340	345	350	355				
0	1619	1619	1618	1618	1618	1618	1618	1617	1617	1616	1617	1618	1620	1623	1627				
5	1605	1603	1600	1598	1596	1594	1592	1590	1588	1587	1586	1586	1588	1590	1594				
10	1578	1574	1569	1566	1562	1560	1557	1554	1551	1549	1547	1547	1549	1551	1554				
15	1531	1525	1519	1515	1511	1507	1504	1501	1497	1495	1493	1493	1494	1496	1500				
20	1455	1447	1440	1435	1431	1427	1424	1420	1416	1414	1412	1411	1412	1414	1418				
25	1343	1335	1329	1323	1318	1314	1310	1306	1301	1298	1296	1295	1296	1299	1302				
30	1205	1198	1192	1186	1181	1176	1171	1165	1160	1156	1153	1152	1153	1156	1161				
35	1051	1045	1040	1034	1028	1023	1018	1011	1006	1001	998	997	999	1002	1007				
40	854	852	847	841	835	828	821	811	803	796	791	791	796	804	816				
45	626	628	625	618	610	601	593	584	577	571	568	568	573	580	591				
50	477	501	510	503	490	473	454	435	417	402	393	393	405	424	451				
55	364	376	382	379	373	366	357	344	332	322	314	313	318	328	343				
60	261	257	258	263	269	274	278	275	271	266	259	253	248	242	236				
65	185	178	179	186	196	205	213	215	215	212	207	200	192	181	169				
70	149	153	157	160	163	165	165	162	158	153	148	144	141	138	136				
75	128	131	132	131	129	126	123	120	117	115	114	113	115	118	122				
80	85.5	82.6	80.5	79.3	78.5	78.1	78.0	78.3	78.8	79.5	80.4	81.2	82.0	82.8	83.6				
85	45.8	46.9	47.2	46.6	45.8	44.8	43.7	42.7	41.8	41.0	40.5	40.3	40.7	41.3	42.3				
90	1.96	1.98	1.99	1.99	1.99	1.98	1.98	2.01	2.03	2.04	2.05	2.04	2.02	1.98	1.92				
95	19.8	17.1	15.8	16.1	16.7	17.6	18.4	18.3	18.1	17.8	17.5	17.3	17.3	17.3	17.4				
100	125	122	111	90.6	69.1	48.0	29.6	25.4	24.7	26.6	30.0	32.1	32.5	32.8	33.0				
105	260	259	262	268	271	269	260	227	188	148	108	79.5	62.4	51.6	47.2				
110	448	448	447	446	445	444	445	450	457	462	467	468	464	459	450				
115	633	633	631	628	625	623	623	629	637	645	654	660	664	667	669				
120	807	807	807	806	805	804	805	810	816	823	830	836	840	843	846				
125	969	970	971	971	971	971	972	977	983	989	995	1000	1004	1008	1010				
130	1116	1119	1120	1120	1120	1121	1122	1127	1134	1140	1147	1152	1156	1159	1162				
135	1249	1251	1253	1254	1255	1256	1258	1263	1268	1274	1280	1285	1289	1293	1296				
140	1366	1370	1372	1373	1374	1376	1378	1382	1387	1392	1397	1402	1406	1409	1413				
145	1470	1473	1475	1477	1479	1481	1483	1487	1491	1496	1501	1505	1508	1511	1514				
150	1559	1562	1564	1566	1568	1571	1573	1577	1581	1585	1589	1592	1595	1598	1601				
155	1634	1637	1640	1642	1644	1646	1649	1652	1656	1659	1663	1666	1669	1672	1674				
160	1697	1700	1702	1704	1706	1708	1711	1714	1717	1720	1723	1726	1729	1731	1733				
165	1747	1749	1751	1753	1755	1757	1759	1762	1764	1767	1769	1772	1774	1776	1778				
170	1785	1786	1788	1789	1790	1792	1793	1795	1797	1799	1802	1804	1805	1807	1809				
175	1808	1809	1810	1811	1812	1813	1814	1816	1817	1819	1820	1822	1823	1825	1826				
180	1832	1832	1832	1832	1832	1832	1832	1832	1832	1832	1832	1832	1832	1832	1832				

C Range: 0 - 360DEG  
C Interval: 5.0DEG  
Test Speed: MEDIUM  
Temperature:25.3DEG  
Operators:  
Test Date:2024-11-10

γ Range: 0 - 180DEG  
γ Interval: 0.5DEG  
Test System:EVERFINE GO-2000\_V1 SYSTEM V2.0.406.10  
Humidity:65.0%  
Test Distance:11.700m [K=0.8547]  
Remarks: